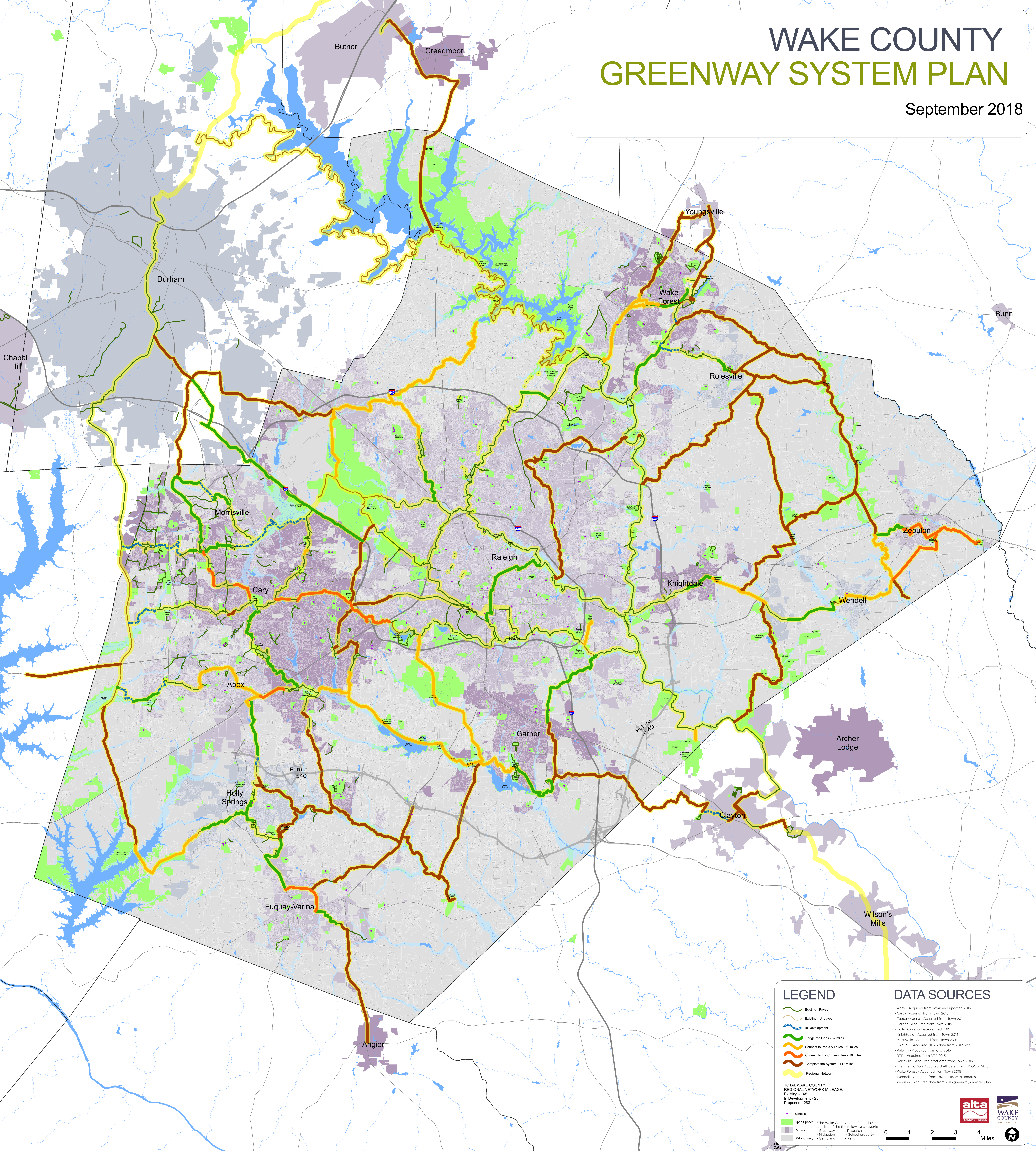


WAKE COUNTY GREENWAY SYSTEM PLAN

September 2018



LEGEND

- Existing - Paved
- Existing - Unpaved
- In Development
- Bridge the Gaps - 57 miles
- Connect to Parks & Lakes - 60 miles
- Connect to the Communities - 19 miles
- Complete the System - 147 miles
- Regional Network

TOTAL WAKE COUNTY REGIONAL NETWORK MILEAGE:

Existing - 145

In Development - 25

Proposed - 283

Schools

Open Space

Wake County

*The Wake County Open Space layer consists of the following categories:

Greenway

Research

Mitigation

School property

Park

DATA SOURCES

- Apex - Acquired from Town and updated 2015
- Cary - Acquired from Town 2015
- Fuquay-Varina - Acquired from Town 2014
- Garner - Acquired from Town 2015
- Holly Springs - Data verified 2015
- Knightdale - Acquired from Town 2015
- Morrisville - Acquired from Town 2015
- CAMP - Acquired NEAS data from 2012 plan
- Raleigh - Acquired from City 2015
- RTP - Acquired from RTP 2015
- Rolesville - Acquired draft data from Town 2015
- Triangle J COG - Acquired draft data from TJCOC in 2015
- Wake Forest - Acquired from Town 2015
- Wendell - Acquired from Town 2015 with updates
- Zebulon - Acquired data from 2015 greenways master plan



0 1 2 3 4 Miles

