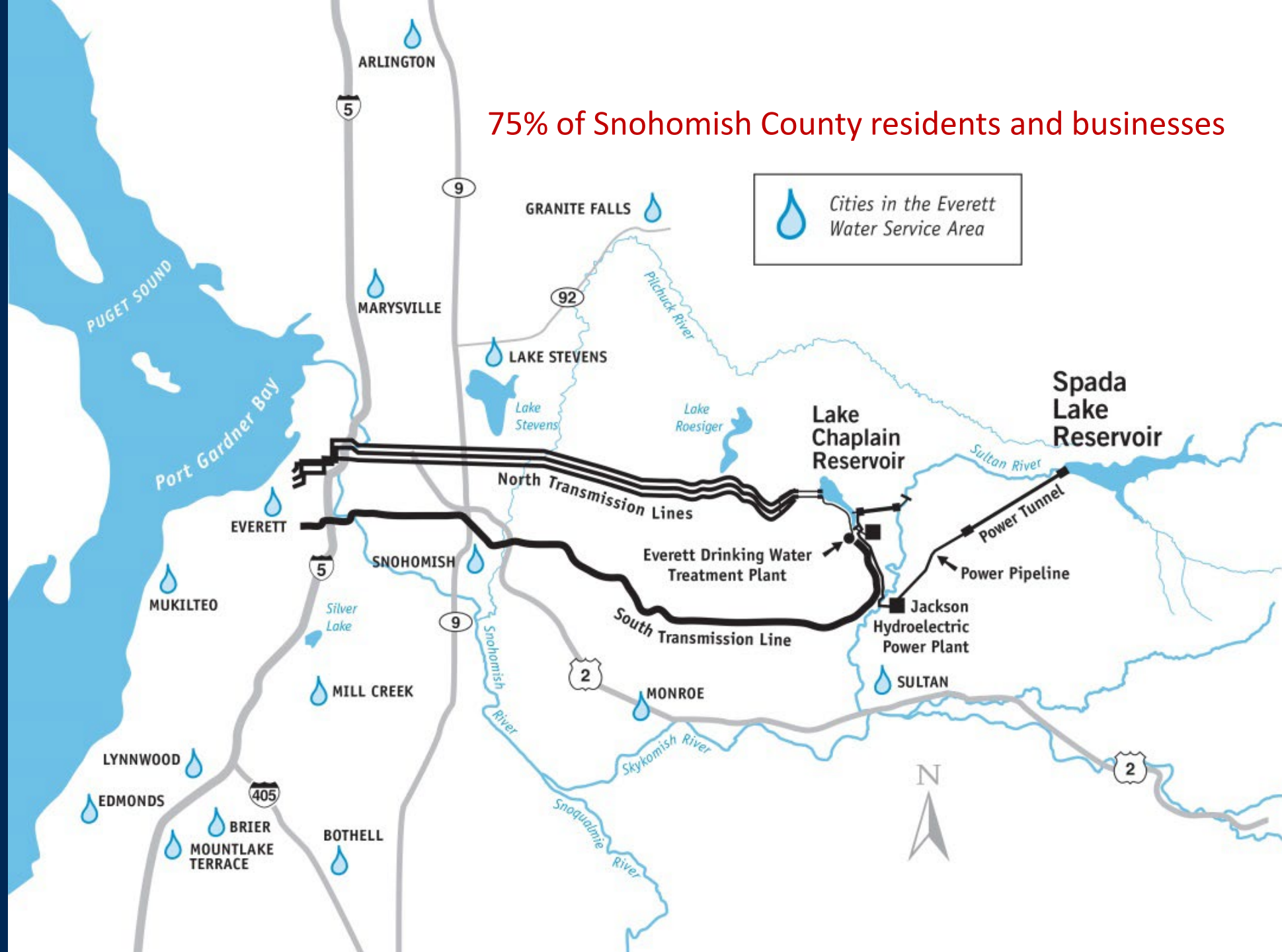


City of Everett

Outdoor conservation kits

75% of Snohomish County residents and businesses



Water Use Efficiency program

- Regional available program
- Residential focused
 - Large school outreach component
 - Speaker bureau
 - Community events
 - Indoor & outdoor kits
 - Program promotion & education
- Commercial support, limited




Water Use Efficiency program

The unique Peak demand element the City of Everett will focus on today is our **outdoor water conservation kit program.**

Accounts for 5% of annual savings goal (WUE)

Save Water Outdoors




In the summer, household water use can double.


Conserve Water:

- Use a FREE* shut-off nozzle when watering by hand.
- Use a FREE* automatic water shut-off timer.
- Use a FREE* soil moisture meter to avoid over-watering.
- Water your lawn every third day if needed.
- Adjust sprinklers so only your yard is watered.
- Raise your lawn mower blades, taller grass holds moisture longer.
- Clean sidewalks and patios with a broom, not the hose.

*WHILE SUPPLIES LAST at 3101 CEDAR ST., EVERETT



Use Water Wisely.
www.everettwa.gov/saveoutdoors

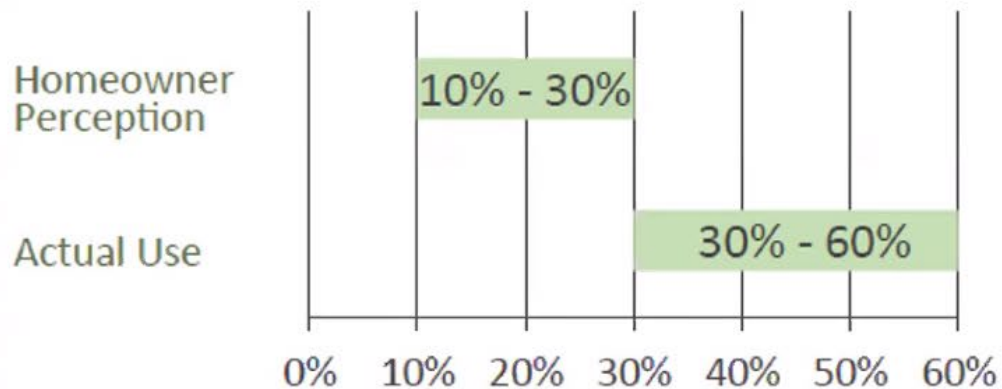


Outdoor watering

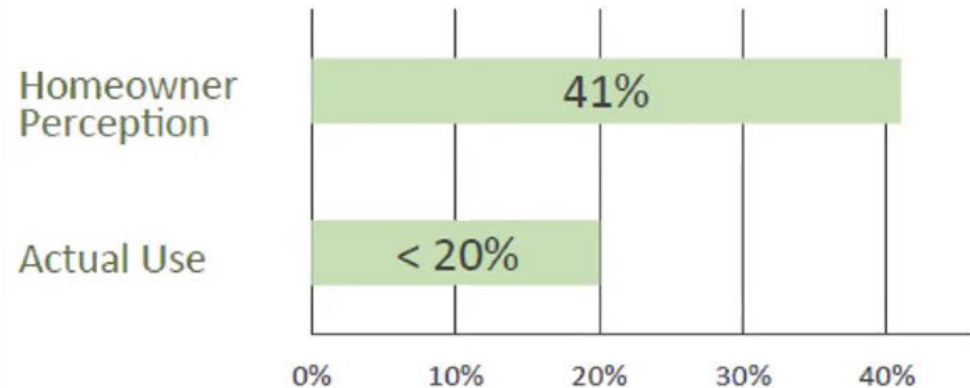


Outdoor Use: A Big Opportunity

Outdoor Water Use of Overall Water Use



Water Efficient Sprinkler Use



Components of outdoor watering “kits”

- Yard watering calendar
- Printed and online
- Spanish version available
- Outdoor water conservation items
 - Auto-shut off timer
 - 7-spray hose nozzle
 - Moisture meter



Kits versus individual items

- Duplicated indoor kit model
- Expensive
- Wasteful
- Kits include multiple aspects of watering
- Lose branding opportunity
- Individual item give-away



Hose nozzles

- Seven Spray Settings: Center, Cone, Flat, Jet Mist, Shower, Soaker + Volume Dial (easy click selector)
- Sediment screen ensures consistent water flow
- Flow rate of 2.5 GPM for water savings
- Calculated savings



Auto-shut off timers

- Ideal for those with lawns
- Water without the waste
- Auto shut off timer (2 – 120 minutes)
- Rotary dial on top of the timer
- Durable plastic housing and a brass connector
- Batteries are not required
- Calculated savings



Moisture meters

- Helps eliminate improper watering
- Can be used in lawn, garden and potted plants
- Measure moisture at root level in soil
- Store in dry, cool location
- No batteries required or calculated savings
- Plus, they're cute!



Summer events

- Neighborhood meetings
- Garden groups
- School STEM events
- National Night Out
- Earth Day
- Community events



Utility bill insert

- Yard watering calendar
- Available outdoor supplies
- Smart watering tips
- Rain barrel program

How does your garden grow?



- 🌿 Landscape your yard with plants local to our region to reduce outdoor water waste.
- 🌿 Native and drought-tolerant varieties require little water beyond normal rainfall.
- 🌿 Use mulch whenever possible to reduce evaporation and retain moisture.
- 🌿 Read plant labels to know their watering and shade/sun needs. Plant them accordingly.
- 🌿 Grouping plants with similar watering needs helps save water and promote a healthy garden.

Put the right plant in the right place to save in your outdoor space.

FREE indoor kits*

Each kit includes:

- Earth shower head, 1.5 gallons per minute
- Faucet aerators, one gallon per minute
- Pipe tape

*Supplies are limited



FREE outdoor items*

- Seven spray option garden hose nozzle
- Moisture meter
- Sprinkler auto shutoff timer

Each item comes separately. Please take only what you need.

*Supplies are limited



Dye strips for toilet leak detection

- A leaking toilet can waste from 30 to 200 gallons of water per day.
- Check your toilets for leaks using toilet dye strips.



All conservation items available at Everett Utility Billing office, 3101 Cedar St., during business hours.
Para información en Español: everettwa.gov/waterconservation



Easy access to items



- Open to the public
- Lobby display
- Utility billing message
- Staff remind bill payers

EVERETT
WASHINGTON

FREE water conservation supplies!

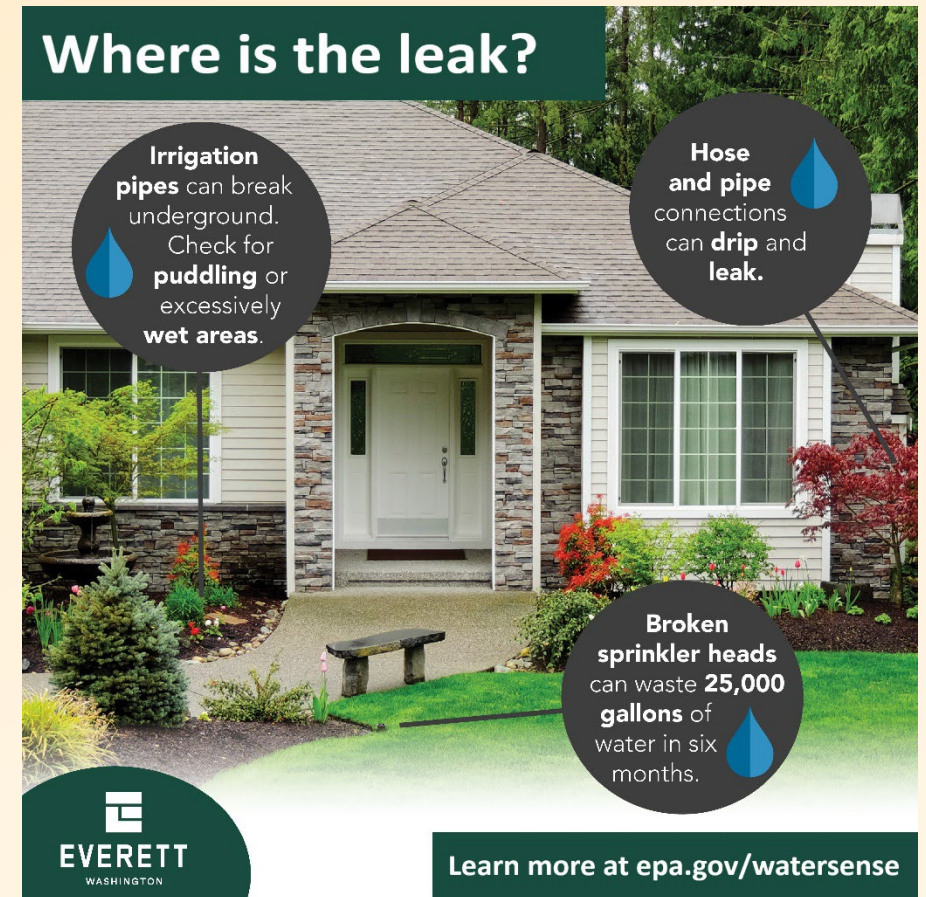
Please take what's useful to you.



Social media posts

Outdoor water conservation messaging

- Leak detection
- Watering tips
- Water supply



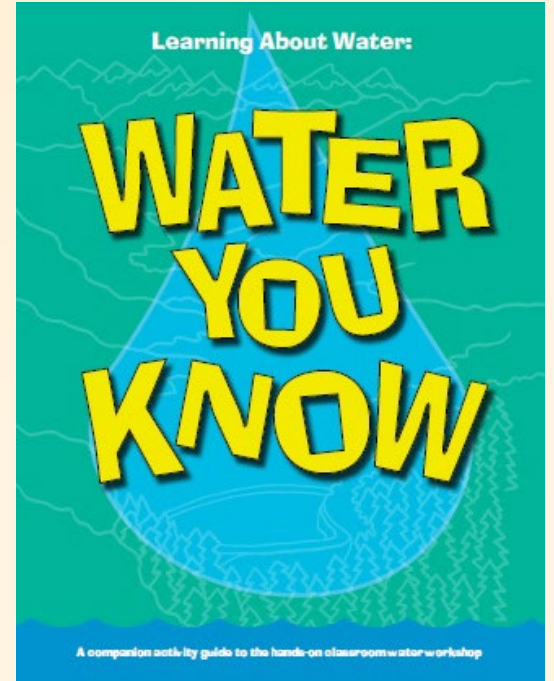
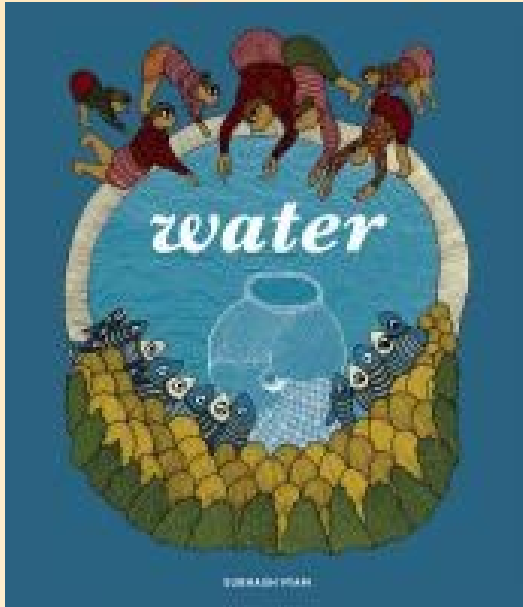
Library program



- No easy access to kits
- Family-oriented
- Minimal costs
- Cross promotion with local agency



Library program



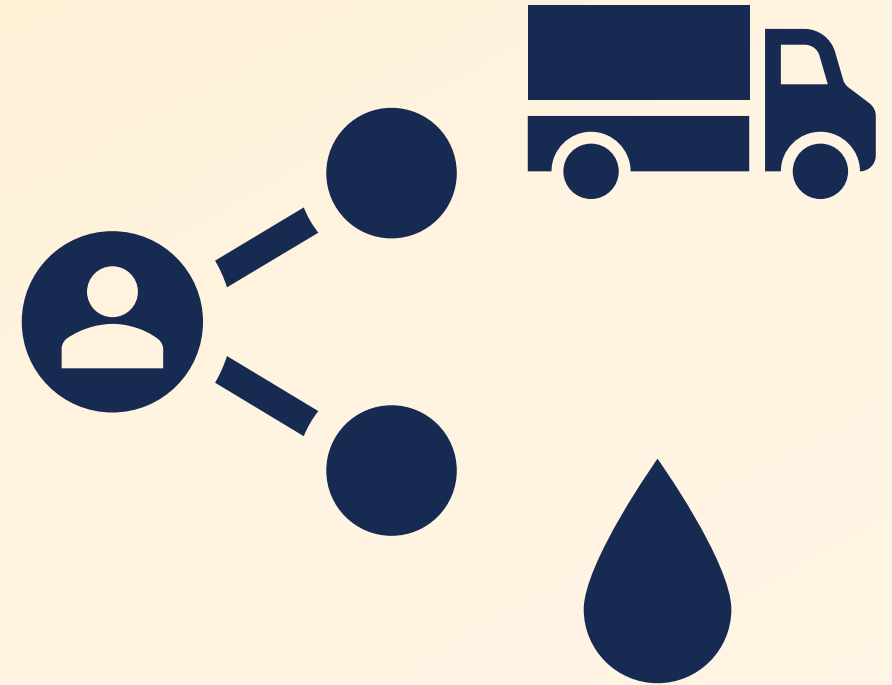
How much savings?

- Regional program with all large partnering water systems participating
- 4 - 7% of WUE annual budget
- 5% of annual savings (+/- 7,500 units)



Logistics

- Regional program
- Separate shipping
- Sole-source RFP – lock in price for multiple years
- Pre-made kits & individual items
- Single-family vs. multi-family



Questions?

Apryl Hynes

Sr. Public Information Education Specialist

City of Everett

ahynes@everettwa.gov

